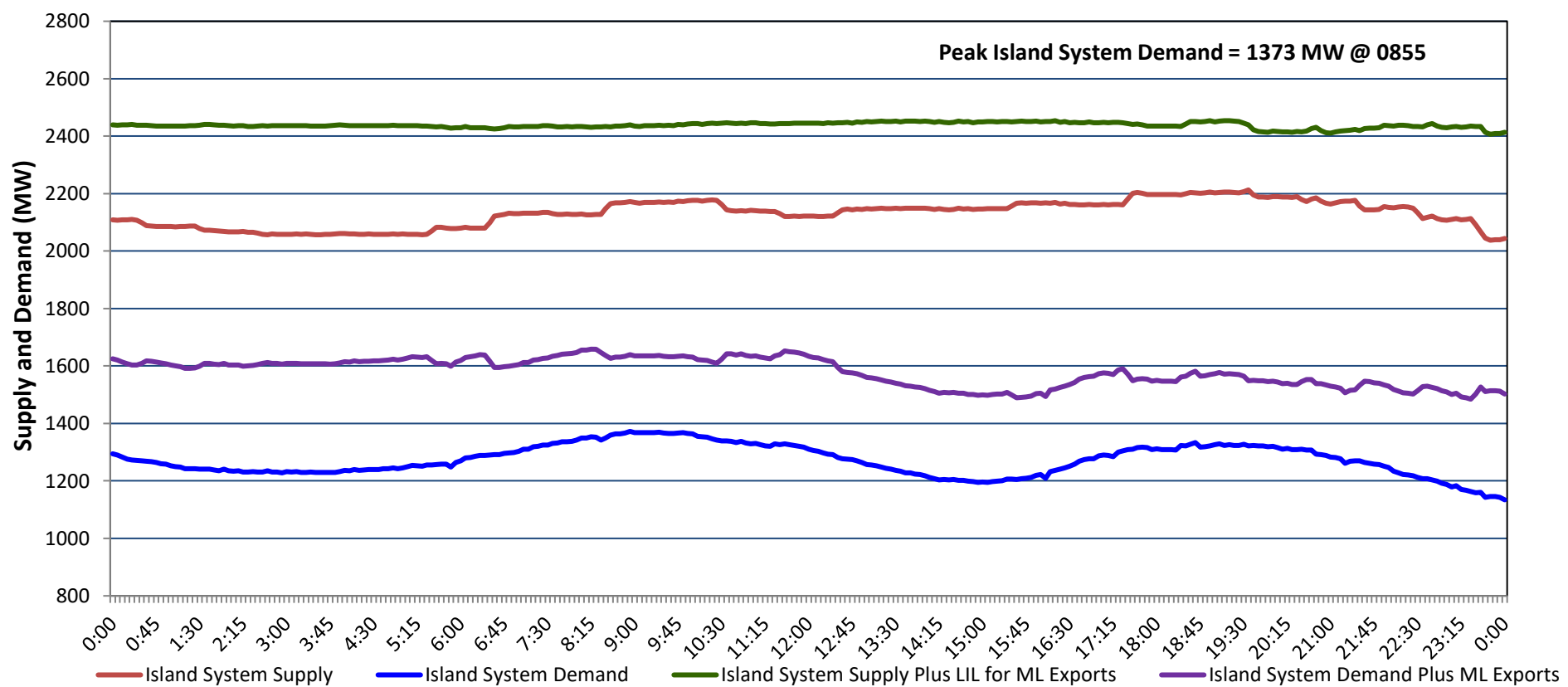


Newfoundland Labrador Hydro (NLH) Supply and Demand Status Report Filed Monday, February 17, 2025

Section 1 Island Interconnected System - Supply, Demand & Exports Actual 24 Hour System Performance For Sunday, February 16, 2025



Island Supply Notes For February 16, 2025 ¹

- A As of 1059 hours, February 12, 2025, Holyrood Unit 2 available at 130 MW due to forced derating (170 MW).
- B As of 1116 hours, February 12, 2025, Holyrood Unit 3 available at 135 MW due to forced derating (150 MW).
- C As of 2051 hours, February 14, 2025, Holyrood Unit 1 available at 70 MW due to forced derating (170 MW).

Section 2 Island Interconnected System - Supply, Demand & Outlook

Mon, Feb 17, 2025	Island System Outlook ²	Seven-Day Forecast	Island System Daily Peak Demand (MW)	
			Forecast ⁸	Adjusted ⁶
Island System Supply: ⁴	2,194 MW	Monday, February 17, 2025	1,385	1,279
NLH Island Generation: ^{3,7}	1,540 MW	Tuesday, February 18, 2025	1,405	1,299
NLH Island Power Purchases: ⁵	115 MW	Wednesday, February 19, 2025	1,360	1,254
NP and CBPP Owned Generation:	205 MW	Thursday, February 20, 2025	1,405	1,299
LIL/ML Net Imports to Island: ⁹	334 MW	Friday, February 21, 2025	1,435	1,328
		Saturday, February 22, 2025	1,440	1,333
7-Day Island Peak Demand Forecast:	1,440 MW	Sunday, February 23, 2025	1,410	1,304

Island Supply Notes For February 17, 2025

- Notes:
1. Generation outages for running and corrective maintenance are included. These are not unusual for power system operations. They generally do not impact customer supply. Hydro schedules outages to system equipment whenever possible to coincide with periods when customer demands are low and sufficient supply reserves are available. However, from time to time equipment outages are necessary and reserves may be impacted.
 2. As of 0800 Hours.
 3. Gross continuous unit output.
 4. Gross output from all Island sources (including Note 3).
 5. NLH Island Power Purchases include: ML Imports, Exploits Generation, Rattle Brook, Star Lake, Wind Generation and capacity assistance (when applicable).
 6. Adjusted for interruptible load and the impact of voltage reduction when applicable.
 7. Due to limitations inherent in the design of combustion turbines, the output of combustion turbines may be reduced in the event that ambient temperatures exceed the threshold required for full rated output. This threshold is dependent on the design of each turbine.
 8. Does not include ML Exports.
 9. LIL Import sunk in the Island System. Actual LIL flows will be restricted by various system conditions including, but not limited to, Island Load, ML Exports and Avalon Unit status.

Section 3 Island Peak Demand and Exports Information Previous Day Actual Peak and Current Day Forecast Peak

Sun, Feb 16, 2025	Island Peak Demand ¹⁰	8:55	1,373 MW
	Exports at Peak		267 MW
	LIL Net Imports to Island		6,719 MWh
Mon, Feb 17, 2025	Forecast Island Peak Demand		1,385 MW

- Notes: 10. Island Demand is supplied by NLH generation and purchases, LIL Imports plus generation owned and operated by Newfoundland Power and Corner Brook Pulp & Paper (Deer Lake Power, DLP).